



## Conargo Wind Farm

### In this issue

- Project update
- Next steps
- Community engagement
- Community sponsorship

### At a glance



**168MW**

Expected capacity



**91k**

Expected homes powered



**74k**

Expected tonnes of emissions avoided

Welcome to the Conargo Wind Farm community newsletter which provides an update on project progress and upcoming activities for landowners, neighbours and the wider community.

The proposed Conargo Wind Farm is located on Wamba Wamba Perrepa Perrepa Country about 45km northeast of Deniliquin and 10km northeast of Conargo, within the NSW South West Renewable Energy Zone. It will consist of up to 28 wind turbines with an expected capacity of 168MW.

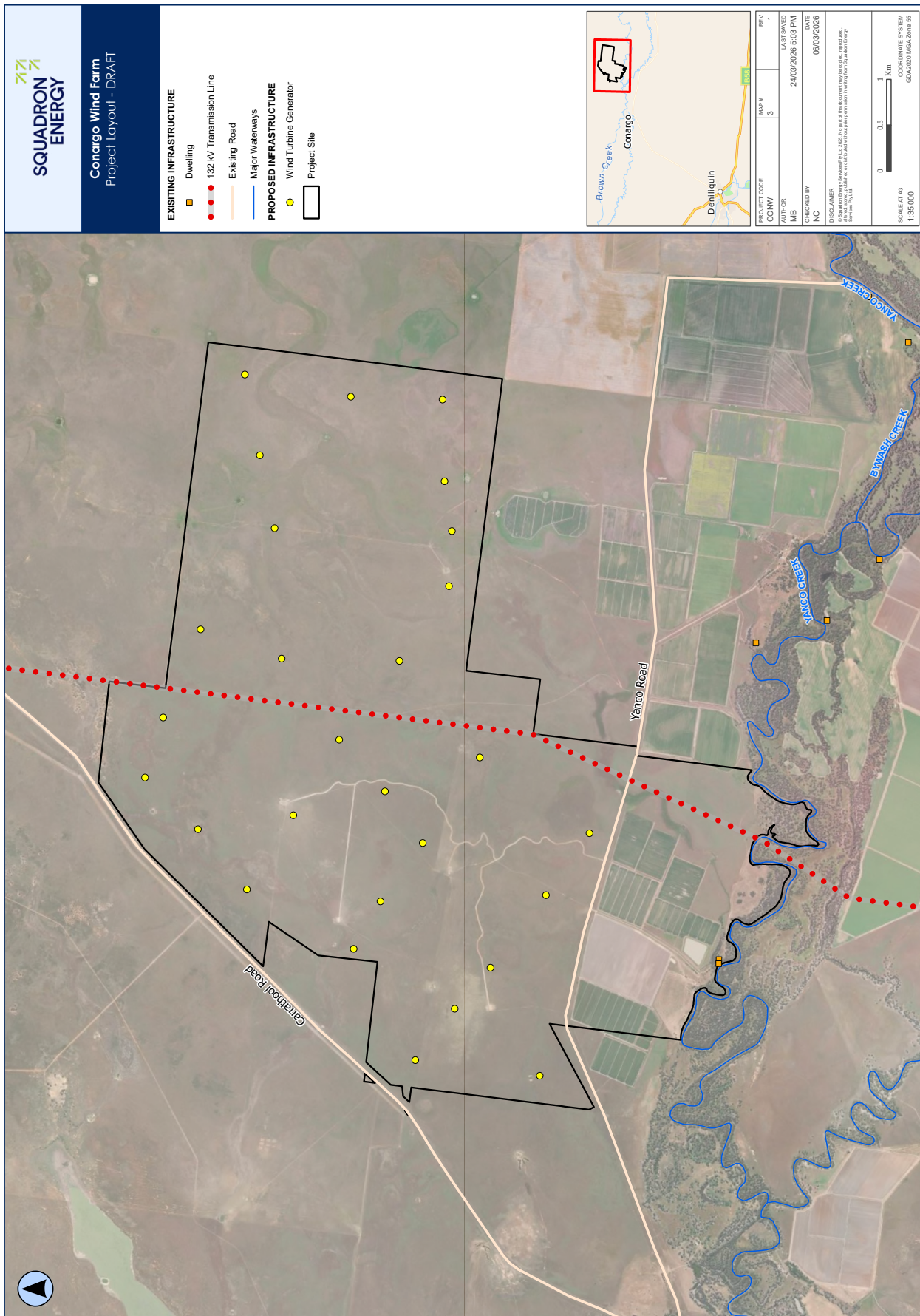
### Project update

The Conargo Wind Farm project team continues to refine the project layout, informed by ongoing technical and environmental assessments such as flood and hydrology modelling and biodiversity surveys.

Consultation with Transgrid and feedback from the local community and neighbouring landholders is also being used to shape the layout.

The design process is ongoing and may continue to evolve as we respond to technical findings and stakeholder input.

# Preliminary project layout



## Next steps

A meteorological mast is expected to be installed north of Yanco Road in August 2026 by a small crew, with work expected to last up to three weeks.

The mast will collect wind speed and direction data up to 160m above ground level to support the assessment of energy production potential on the site. The location was chosen in consultation with landowners to minimise environmental and land use disruption.

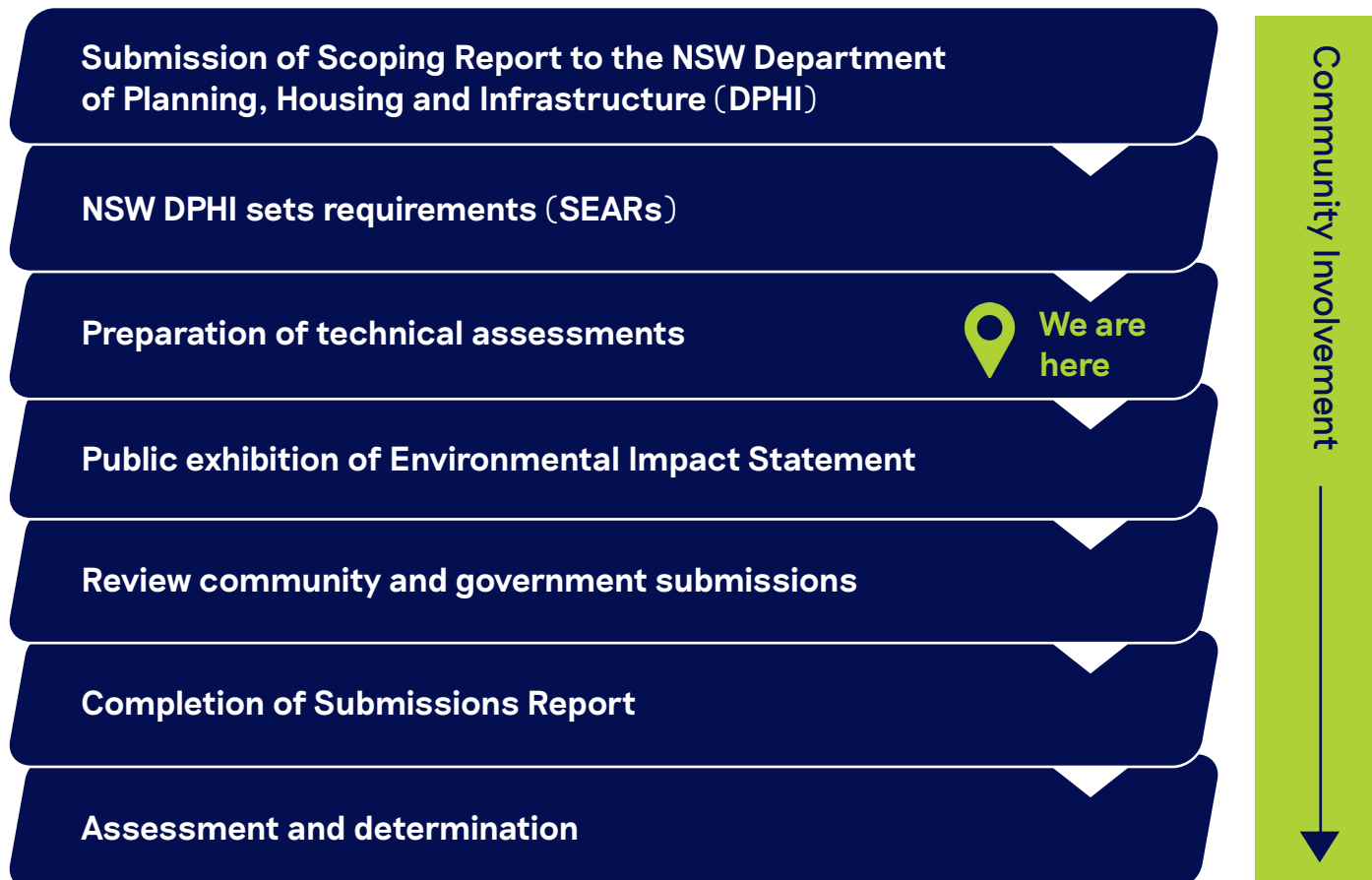
We are also carrying out flood and hydrology studies, as well as a LiDAR flyover to provide engineering inputs needed to inform the project layout and technical studies for the Environmental Impact Statement (EIS).

On ground biodiversity investigations are ongoing and further on ground investigations are likely to start in late 2026.

The EIS is expected to be lodged in late 2027.



## Environmental assessment process



## Community engagement

In November 2025, we hosted drop-in information sessions in Deniliquin and Conargo to provide community members the opportunity to learn more about Conargo Wind Farm and speak directly with the project team.

These informal sessions were designed to make information accessible and provide the opportunity to ask questions, share feedback and raise matters of local interest.

Insights gathered during these sessions continue to help inform the ongoing development of the project and reinforce the importance of maintaining transparent, two-way engagement with the community as the project progresses.

We regularly visit the area, so please contact us if you would like to arrange a meeting or a phone call update. We encourage you to share your questions, concerns and feedback with the team. Subscribe to our mailing list by visiting [our website](#).



## Community sponsorship

Our sponsorship program is open all year round and we are pleased to support several local community initiatives, including:

- Deniliquin Boat Club with the purchase and installation of a battery to complement the club's existing solar system
- Deniliquin Rams Football Netball Club with the installation of a new PA system
- Teacher Earth Science Education Program to deliver a day of science education at Conargo Primary School
- Deniliquin Can Assist's high tea event in May
- Deniliquin South Public School's Term 3 student disco event.

We encourage community groups and organisations in Conargo and Deniliquin to apply. Further details on the sponsorship program can be found on [our website](#).



## Contact us

Nadine Caff - Project Manager

Phone: 0480 019 836

Email: [conargowind@squadronenergy.com](mailto:conargowind@squadronenergy.com)

Web: [conargowindfarm.com.au](http://conargowindfarm.com.au)

**SQUADRON  
ENERGY**

[squadronenergy.com](http://squadronenergy.com)