

UUNGULA WIND FARM: COMMUNITY CONSULTATIVE COMMITTEE

Company Update – May 2026

AGENDA

1. Previous meeting minutes
2. Project update
3. Environmental update
4. Economic development
5. Transmission Connection Project Update
6. Community and stakeholder engagement
7. General business





1. Previous Meeting Minutes

- Minutes distributed

2. Project update



Sanjay Goel – Project Manager

- Goolma Road & Twelve Mile Road intersection – Works completed, intersection active with final documentation being processed and closed out with TfNSW.
- TransGrid/Downer Switching Station substantially complete along with final connection made to existing OHL. Substation advancing with the detailed civil and foundation works. Internal Transmission line stringing of overhead lines substantially complete.
- Wind farm construction – Works have progressed well during this period with 55 foundations now poured and deliveries to Port of Newcastle have commenced to site from Tuesday 28/04/26.
- Internal reticulation to Wind Turbines circuits approximately 27% complete.
- Operation & Maintenance area construction in advanced stages of completion in readiness for Operation Activities mobilisation, currently scheduled for last quarter 2026.
- Mitchell Highway/Goolma Road intersection – commencing 14 May 2026. Currently scheduled to take approximately 4-6 weeks.
- Speed limit on TMR

Goolma Road & Twelve Mile Road Intersection



**Image of the first
oversize overmass
(OSOM) delivery to
UWF**

**Deliveries
commenced after
the ANZAC day
long weekend.**



4. Environmental Update



Dean Woods– Senior Environmental Advisor

Rehabilitation

- Rehabilitation works and drainage lining continue along access roads and WTG sites
- Re-use of rock and mulch material for batter protection and drainage
- Weed spraying

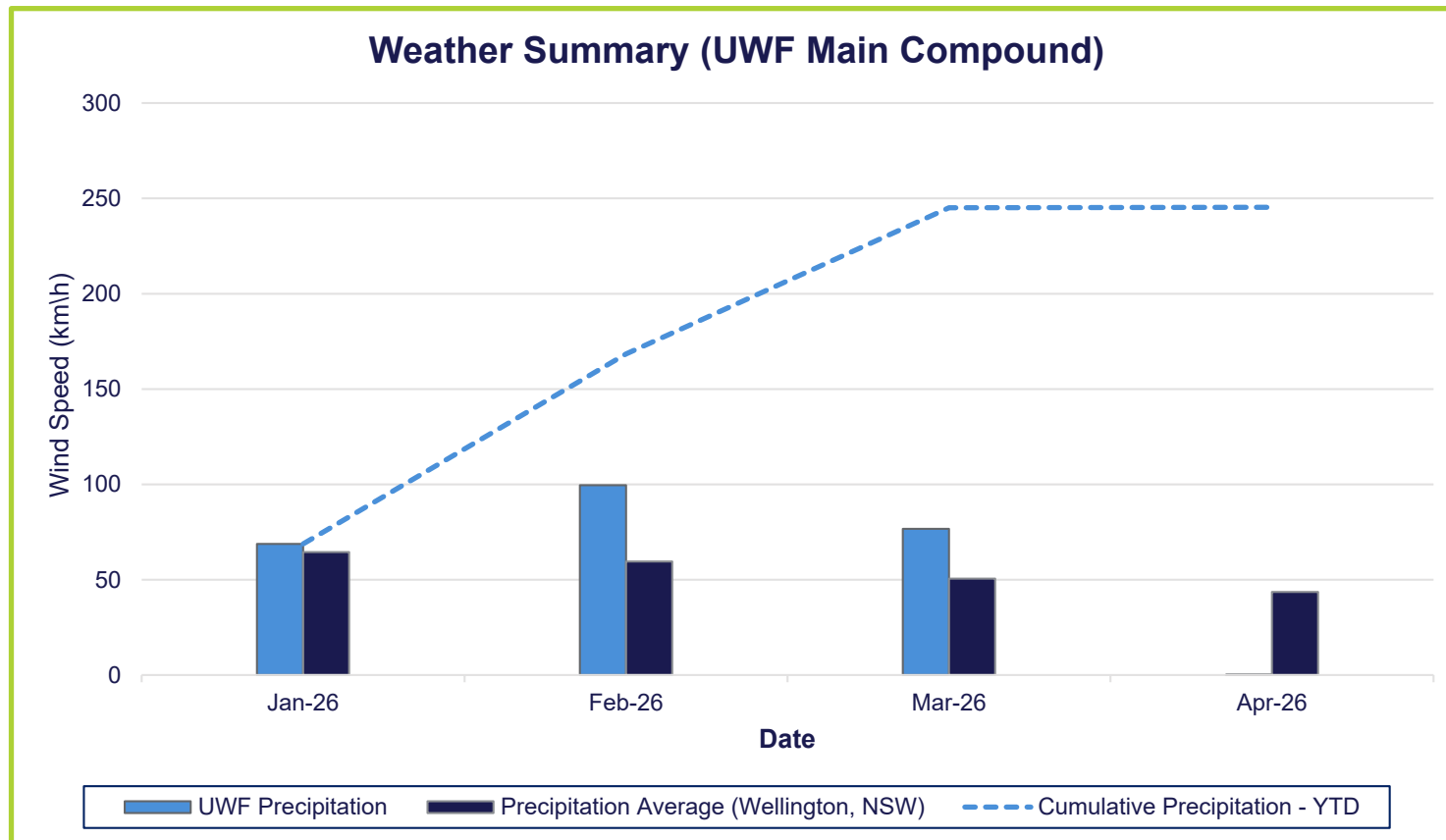


4. Environmental Update

Dean Woods– Senior Environmental Advisor



Rainfall

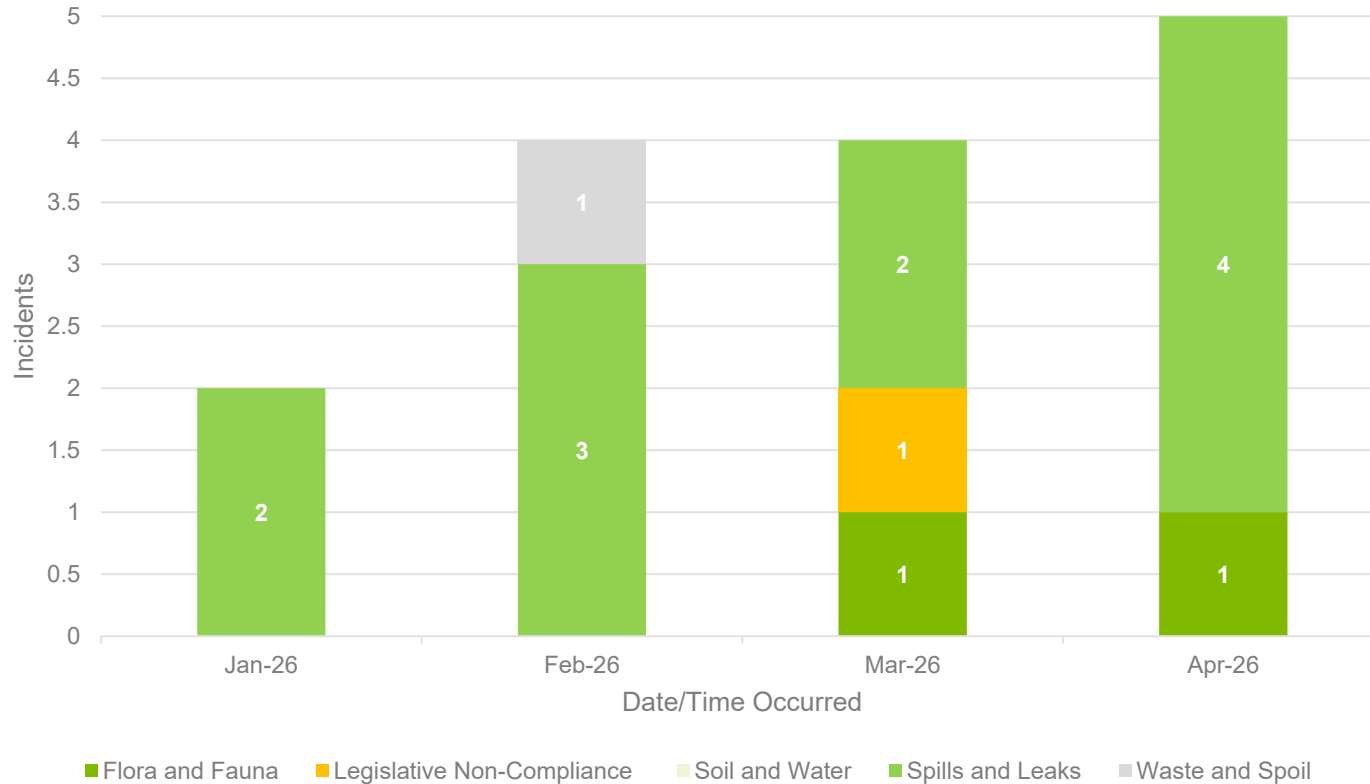


4. Environmental update



Dean Woods – Senior Environmental Advisor

Environmental performance – Incidents



Date/Time	Summary
31/03/2026	SSD 6687, Condition B35 of Schedule 2 non-compliance. During the EMS audit completed on 31 March 2026, insufficient evidence was available to confirm that all required notifications had been provided to CASA, Airservices Australia and the RAAF prior to the construction of some meteorological monitoring masts.
23/03/2026	Small leak from trailer
21/03/2026	Hydraulic oil spill GE Pad
2/03/2026	Unauthorised land disturbance
26/04/2026	Water cart hydraulic oil spill
22/04/2026	Dump truck diesel spill
16/04/2026	Burst hydraulic hose and associated spill
13/04/2026	Fuel spill 200 litres
12/04/2026	Fauna strike

4. Environmental Update



Dean Woods – Senior Environmental Advisor

Environmental Approvals:

- The Traffic Management Plan (TMP) for Non-blade OSOM movements was approved by Department of Planning Housing and Infrastructure (DPHI) 1 April 2026. A revised TMP for Blade deliveries was submitted to DPHI 13 April 2026 for approval.
- A revised Environmental Management Strategy and Emergency Plan was submitted to DPHI for approval in April. The Emergency Plan was approved 4 May 2026.

Independent Environmental Audit (IEA) – No.3

The 3rd IEA is scheduled to commence 13 May 2026 and pertains to post-approval requirements and compliance during construction of the Wind Farm.

5. Economic and employment development opportunities



Bart Sykes – Regional Economic Development Manager (Central West Orana)

Accommodation in Wellington – Bellhaven

- 100% First Nations renovation project and local to Wellington and Dubbo.
- Facility now occupied and sourcing products locally (some not all).

Voluntary Planning Agreement

- Based on no. of WTGs committed at the end of FY. DRC are looking to put the UWF VPA under the renewable energy committee

Local Content / Economic Development

- Continuing to promote local opportunities, updating online databases and linking local business to not only UWF but also SCWF (local content lists)
- ~95+ local businesses engaged on the project to date
- Spoke at the last session about better communicating this and we still have a job to do

Category	Suppliers
Accommodation & Venues	Accommodation Provider (Local) AirBNB Local Residents 01-03 Bridge Motel Wellington Grand Hotel Hermitage Hill Plasto and Company Pty Limited Sterling Turner Real Estate Mallyan Cultural Centre Wellington Soldiers Memorial Club Wellington Caves
Catering & Hospitality	75 on Arthur Restaurant Cow & Calf Hotel Federal Hotel Four Cats Coffee It's Been a Journey Jespresso Lion's Club of Wellington Monkey on a Wire Sangs Hot Bread & Bakery Wok's Spit Roast & Carving
General Local Services	AGnVET Wellington Alice Mary Design Australia Post – Wellington Post Office Binjang Community Radio Binjang Tea Coles Wellington D'Aquino's Liquor Wellington Hardware Home & Rural The Reject Shop Twin Rivers Printing Wellington Craft Coop Wellington Newsagency Woolworths Wellington

Wellington Suppliers



Wellington Operational Suppliers

Category	Suppliers
Fuel, Vehicle & Transport	Ampol Wellington BP Wellington EG Ampol Wellington Shell Service Station Ron Stubberfield Toyota MNR Auto Electrics T & N Auto Repairs Wellington Carwash
Trades & Maintenance	Black Sky Blak Power Ian Darney JKD Pest Control KLC'S Cleaning Services Locksmith & Security Solutions (LSS) Mickey D's Redfern Power Solutions Pty Ltd Robert Barry Denovan Plumbing Wellington Plant Hire Yindyamarra Land Care & Maintenance
Plant & Civil Support	S and K Contracting Satts Satt's Plant Hire & Haulage Pty Ltd Ungula Pastoral
Community & Training	Kerry Ann Stanley (KAEC)



Dubbo & Orange Regional Suppliers

Region	Suppliers
Dubbo	Active Tree AusReo Avis B4 U Dig Locators Boral Carpet Choice Cleanaway Coates Cobra Compass Consulting DCL EnviroScience EziQuip Fardells Haulage Haroca Ian Hall JLE John Sherwood Langleys Coaches Lewis Auto MAAS Macquarie Geotech Matt Bender Regional Regional Group Sitech Western Survey Wils Traffic Management Woodhams
Orange	A-Plant De Witt Consulting Freo Inco Group Tripple 6

3. Lumea – Transmission Connection Project

Maki Okamura – Project Manager Lumea



Ungula Wind Farm Transmission Connection Project

May 2026



Uungula Switching Station (UGS) – Progress Photos



Switching Station UGS

- Switching Station Energised.

Uungula Transmission Line 7L – Progress Photos



Transmission Line 7L

- Transmission Line works completed.

Uungula Substation (UGW) – Progress Photos



Substation UGW

- Bulk earthworks almost complete.
- Transformers bund construction well underway.

Project activity

Please note...this timeline is subject to change

Local Business Engagement

- Micky D's Cleaning
- Coates Dubbo (and their subcontractors)
- Strait Up Cranes
- A1 Earthworks/ Maas Group
- Local Vehicle services of vehicles
- Hot Engineering
- KB Concrete
- DeWitt Surveying
- Will box

Timing

- **March 2026:** Energisation of the Switching Station.
- **April 2026:** Completion of Transmission Line stringing
- **October 2026:** Practical Completion.

Traffic – next 3 months

- 15-20 light vehicles daily
- 10-15 heavy vehicle movements daily
- 3 OSOM deliveries

Upcoming works

- **May 2026:** Transformer Deliveries to site.
- **September 2026:** Energisation of UWF Transmission Line and Substation.

6. Community and stakeholder engagement

Jane Sullivan Community Relations Advisor UWF



Recent communications:

- OSOM deliveries via Consultation Manager
- OSOM schedule of deliveries – look ahead
- Mitchell Highway/Goolma Road intersection upgrade (commencing 14 May)
- Any OOWH and blast notification continues

Community/Site Visits:

- STEM challenge in Dubbo in March
- International Women's Day in March
- Try a Trade in Dunedoo and Dubbo
- Cultural appreciation workshop with local provider Kerryann Stanley on 30 April
- Wellington and Dubbo Show both in May
- Dubbo Council, Forestry Corporation and Southwest REZ visited site in April and May

Complaints:

- Two dust complaints received in April

Upcoming:

- May/June Newsletter
- Prepare for first blade delivery
- Sponsorship - new financial year

OSOM MOVEMENTS UPDATE – ARES/GE



Project Traffic and Transport Liaison Group

- Establishment of a Traffic and Transport Liaison Group (TTLG) - Authority and Agency Representatives: TfNSW, EnergyCo, NSW Police and DRC
- Key drivers: Support ongoing coordination and communication regarding transport activities.
- Scheduled regular meetings on a fortnightly basis during initial period then monthly. (Learnings/Challenges).

Key Delivery Learnings (on-going)

- TfNSW and NSW Police – Delivery observation travelling from the Port to site.
- Positive, observations noting effective communication, strong traffic management practices, and good coordination between escort vehicles and drivers throughout the journey. This included accommodating local road users, such as allowing a livestock vehicle to pass on Saxa Road safely.

Challenges:

- Current road network upgrades to interactions (Port to site).
- Delivery timing taking into consideration safety, communication and minimising impacts to local road users wherever possible.
- Monday truck fire on Saxa Road resulted in two OSOM vehicles remaining overnight in Dunedoo. While this was an unplanned event, the decision helped avoid additional vehicle movements in the area during the incident response and demonstrated the project team's commitment to safety and coordination with emergency services and relevant authorities.

Delivery Schedule:

- Non blade deliveries began after the ANZAC day long weekend.
- Blade deliveries to commence in July.

Blades

- Blades will travel through the night, arriving to site by 10:00am

Tower Sections & Nacelles

- Towers and Nacelles are currently leaving Newcastle in the early morning to arrive at site by 1:00pm.

OSOM MOVEMENTS UPDATE – ARES/GE



Community feedback (relating to OSOM movements)

- One enquiry received seeking clarification on whether OSOM deliveries utilise pilot escort vehicles at both the front and rear of convoys.
- Ongoing maintenance and reporting requirements.
 - Community feedback and enquiries received in relation to transport activities
 - Regular update on feedback to the CCC / Project Website.
- Regular look ahead delivery schedule.
 - Provided on project website and is distributed to local councils, TfNSW and TMR stakeholders.
 - Community members and interested stakeholders are also able to opt in to receive the link directly.

7. General Business

