



## Uungula Wind Farm

### In this issue

- Project update
- OSOM delivery schedule
- Uungula Connect
- Community

### At a glance



**220k**

Expected homes powered



**414MW**

Expected capacity



**560k**

Expected tonnes of emissions avoided

### Project update

As we reach the halfway point of the year, it's a great opportunity to reflect on the progress we've made at Uungula Wind Farm and what is coming next. We have reached some important milestones including the start of oversize overmass (OSOM) deliveries to site and the completion of the first nine pre-installations of tower sections, with blade deliveries to start in the next few weeks.

The first batch of wind turbine components was delivered to site in April, heralding the start of the next phase of the project. Up to 26 OSOM deliveries are now scheduled to arrive each week from the Port of Newcastle.

Major wind turbine components weighing up to almost 100 tonnes each are being transported from port to site under approved traffic management arrangements.

We thank the community and motorists for their patience while these deliveries take place.

## OSOM delivery schedule

Non blade components depart Newcastle in the early morning six days per week, with departures spaced 30 minutes apart and assisted by pilot vehicles.

OSOM deliveries will be paused until approximately mid-July while we upgrade the Goolma Road and Mitchell Highway intersection, to allow blade deliveries to site.

Please refer to the schedule for delivery times noting the schedule may change due to weather or operational conditions.



The latest schedule is available on Squadron Energy's website at [https://link.squadronenergy.com/UWF\\_OSOM](https://link.squadronenergy.com/UWF_OSOM) or by scanning the QR code.

## Roads update

The upgrade of the Mitchell Highway and Goolma Road intersection is well underway and is due to be completed mid-July. The upgrade will improve safety and support oversize overmass deliveries of wind turbine blades and components to the project site.



## Uungula Connect launches

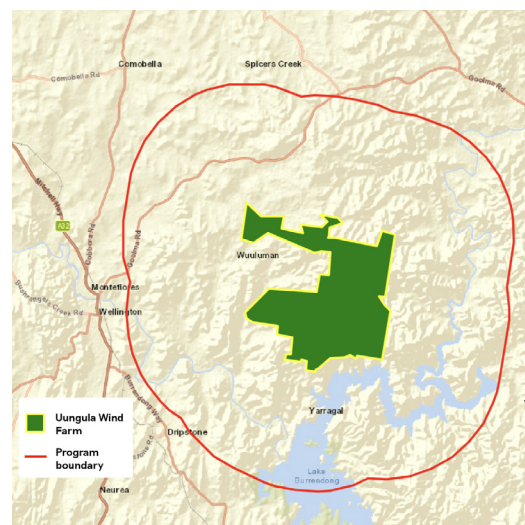
Squadron Energy is committed to delivering real benefits for local communities where we operate. We have worked closely with our Uungula Wind Farm landowners and neighbours to design a meaningful investment program, which will connect eligible residents and businesses to Starlink, NBN or other internet services.

Uungula Connect is a rebate service for households and businesses within approximately 10km of the Uungula Wind Farm boundary.

The rebate is administered by Reswitch. It is capped at \$3,200 per household over 24 months and can be used on new or existing subscription plans, hardware and installation.

We are inviting eligible members of the community to attend a drop-in session at our Wellington office, where they can learn more about the program and receive assistance with registration.

The session will take place on Monday 20 July 2026 from 10am to 4pm, at 16-18 Maughan Street, Wellington NSW 2820.



Scan the QR code for more information.

## Supporting Australian manufacturing and jobs



Australian manufacturing is playing a vital role in the construction of Uungula Wind Farm with Western Sydney-based Precision Oxycut producing critical foundation components. Scan the QR code to read more.



## Doors open at revamped Bellhaven facility



The Bellhaven facility, which had been unoccupied since 2018, has undergone extensive refurbishment by local First Nations businesses and will now provide housing for workers to support construction of the wind farm. Scan the QR code to read more.



## Supporting local cricket

Squadron Energy's Uungula Wind Farm sponsored the junior club from the Wellington District Cricket Association for the 2025/2026 season, which led to the purchase of brand-new playing shirts and caps for players. Scan the QR code to read more.



## Wellington Show

We attended the Wellington Show's 150th Anniversary on 16 May 2026 where Squadron Energy was proud to sponsor the evening fireworks display. With perfect weather throughout the day, the event attracted a fantastic crowd and provided a great opportunity to meet with many local residents and visitors. Our team enjoyed sharing information about the project and answering questions, strengthening relationships with the community.



## Green pastures

The combination of recent warmer than average temperatures and above average rainfall has left the wind farm site looking particularly lush and green. Vibrant green pastures and contentedly grazing livestock are a welcome sight, reflecting the health and productivity of the landscape that surrounds the wind farm.



## Contact us

Sanjay Goel - Project Director

Phone: 0488 820 191

Email: [uungulawind@squadronenergy.com](mailto:uungulawind@squadronenergy.com)

Web: [uungulawindfarm.com.au](http://uungulawindfarm.com.au)

  
SQUADRON  
ENERGY

[squadronenergy.com](http://squadronenergy.com)