

APPENDIX 18

Communications Responses

Letter from Kham Souksamlane, Capacity Planner, Telstra Corporation

Email from Jayantha Wickramasinghe, Technical Specialist, Optus

Email from Kate Mills, Property Manager, Broadcast Australia

Email from Alan Moston, Electrical Services Technical Support,
Goldenfields Water County Council



16 April 2013

Network and Access Technology
USO & Area Planning
L4/52-54 Railway Pde Burwood 2134
Telephone (02) 8576 9853
Facsimile (02) 9397 2030
Kham.Souksamlane@team.telstra.com

Adrian Maddocks
Senior Development Manager
Wind Prospect CWP Pty Ltd
45 Hunter Street, Newcastle, NSW 2300, Australia

Re: Bango Wind Farm - Notification and Feedback Request

Dear Adrian,

In response to your Email dated 22 August 2012 and subsequent supplied of the coordinates for the proposed planning layouts dated 15 April 2013, a desk top study was undertaken of the area and nearby telecommunications infrastructure.

Based on the provided information relating to the proposed wind farm on rural land to the south of the town of Boorowa and the village of Ryde Park, NSW, results of Radio rayline analysis investigation reveals that there is no potential for undue interference from the proposed wind farm. Also, results of Optic & Copper cable investigation reveals that there is no cable within 200m of any of the proposed location of the Wind Turbines.

Telstra has no objection to this development in relation to the proposed wind farm subject to Wind Prospect CWP Pty Ltd confirming its agreement to the conditions and matters set out in this letter.

Telstra requires Wind Prospect CWP Pty Ltd to notify of any additional turbines, or any change to the proposed location of the Wind Turbine, so that impacts on Telstra's Network can be re-assessed.

Telstra will require the protection of/relocation of its fixed telecommunications infrastructure that may be impacted by activities on this site. To minimise risk of liability due to any damage, the DialBeforeYouDig 1100 Inquiry number should be contacted to obtain location of Telstra plant before commencement of construction work.

For future correspondence and enquiries regarding this matter, please contact the undersigned on (02) 8576 9853.

Yours faithfully,

Kham Souksamlane

Adrian Maddocks

From: Jayantha Wickramasinghe [Jyantha.Wickramasinghe@optus.com.au]
Sent: Wednesday, 1 May 2013 1:34 PM
To: Adrian Maddocks
Cc: Maxi Victoria
Subject: RE: Proposed Bango Wind Farm
Attachments: OptusAsset_Bango_WindFarm.pdf

Follow Up Flag: Follow up
Flag Status: Flagged

Dear Adrian

We have reviewed the proposed Bango wind farm development and wish to inform that there is no impact on existing Optus network or planned sites in the area for a foreseeable future.

Please keep us informed if the location of the wind turbines change for due to any reason.

Regards
Jyantha

Jyantha Wickramasinghe

Technical Specialist | Radio Transmission Planning - National | Networks | Optus

T: 02 8082 0353 | M: 0411 526 668 | F: 02 8085 5189 | 1 Lyonpark Road, Macquarie Park NSW 2113
<http://www.optus.com.au>

Optus Network Blog; www.optus.com.au/theoptusblog

Follow us on: <http://twitter.com/optus>; <http://www.facebook.com/optus>; <http://www.youtube.com/user/yesoptus>

This is email may contain confidential information. If you are not the intended recipient, please notify the sender immediately and delete this email from your system. You must not disclose this email to anyone without express permission from the sender. The contents of all emails sent to, and received from, Optus may be scanned, stored, or disclosed to others by Optus at Optus' discretion. Optus has exercised care to avoid errors in the information contained in this email but does not warrant that the information is error or omission free.



Please think of the environment before printing this email.

From: Adrian Maddocks [<mailto:adrian.maddocks@wpcwp.com.au>]
Sent: Tuesday, 16 April 2013 11:14 AM
To: Stanley Lim; Raymond Chang
Cc: Bruce Kerr
Subject: Proposed Bango Wind Farm

Dear Stanley/Raymond

Wind Prospect CWP is in the early stages of designing a wind farm project on rural land near Boorowa and Rye Park, north of Yass in NSW. The proposed Bango Wind Farm (www.bangowindfarm.com.au) could accommodate upwards of 100 wind turbines and produce in the order of 700 gigawatt hours (GWh) of clean, renewable energy, enough to supply the equivalent demand of 100,000 average homes across Australia.

This email has been sent to you in order to ensure that you have been informed about the project at this early stage and are brought up to date with the development of the wind farm. We welcome any comments you have about the project to further inform its design prior to submitting for planning consent in 2013.

It may be that this is the first notification of the project that you have received directly, and this reflects the maturity of the project. It is only recently that we have been able to more confidently define the turbine areas after a solid review of the requirements provided to us by the NSW Department of Planning and Infrastructure in March 2011. An updated map of the project investigation envelope for potential wind turbines can be found on the front page of

our first newsletter located on the project website [here](#). You will see that modifications have already been made to the project envelope, based on feedback received since March 2011.

The Preliminary Environmental Assessment was submitted to the NSW Department of Planning and Infrastructure in March 2011 and is available to view at www.planning.nsw.gov.au (following the link to Development – Major Project Register or click [here](#)). Over the next few months the focus is on seeking feedback from stakeholders and the local community, that will be fed into the project and help further shape the design and studies required to conduct the thorough assessment of the project.

At this stage, we are anticipating the maximum wind turbine height of the proposed wind farm to include towers up to 120 metres and rotor diameters of 144 metres, with a maximum blade tip height of 192 metres. These figures represent the largest available component sizes on the market and the approach is consistent with best practice assessment methodology.

For the consideration of your organisation I have also attached coordinates for both proposed layouts (MGA 94, Zone 55) for your assessment.

If you have any questions about this letter or the project in general then please feel free to contact me through the channels below or on my mobile on 0488 798 311. I would be happy to answer any questions you have about the project.

Regards,
Adrian

Adrian Maddocks
Senior Development Manager

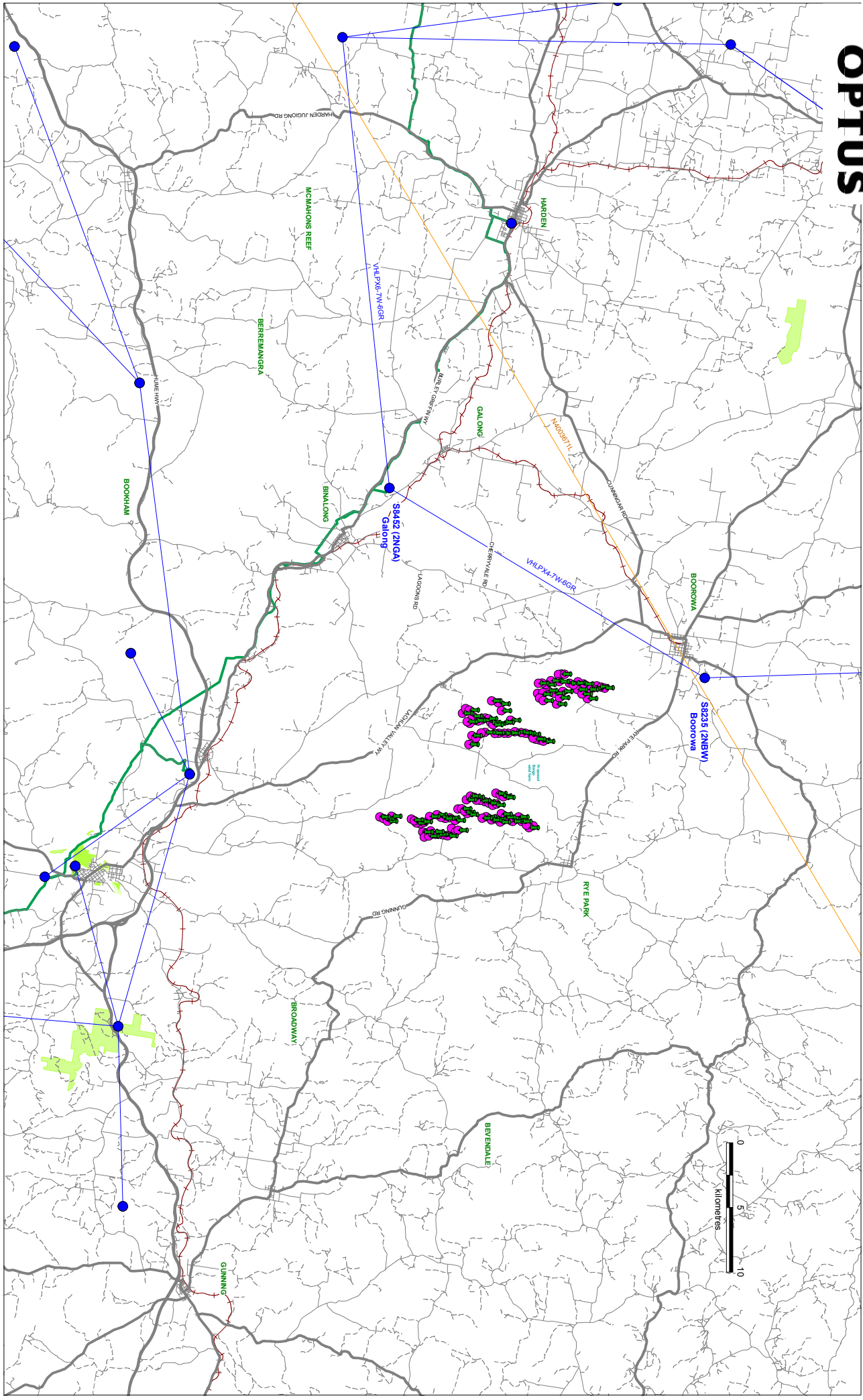
Wind Prospect CWP Pty Ltd

P.O. Box 1708, 45 Hunter Street, Newcastle, NSW 2300, Australia
T: +61 (0) 2 4013 4640 F: +61 (0) 2 4926 2154 M: +61 (0) 488 798311
E: adrian.maddocks@wpcwp.com.au W: www.windprospect.com.au



Please consider the environment before printing this email.

This message (and any associated files) is intended only for the use of the individual or entity to which it is addressed and may contain information that is confidential, subject to copyright or constitutes a trade secret. If you are not the intended recipient you are hereby notified that any dissemination, copying or distribution of this message, or files associated with this message, is strictly prohibited. If you have received this message in error, please notify us immediately by replying to the message and deleting it from your computer.



1 May 2013 - Optus CAD Group
(02) 8085 8371

- Optus underground fibre
- Optus microwave link
- Optus leased link
- Optus GSM/MS Site

- Bango Wind Farm - Layout 1
- Bango Wind Farm - Layout 2

Adrian Maddocks

From: Kate Mills [Kate.Mills@BroadcastAustralia.com.au]
Sent: Thursday, 2 May 2013 4:15 PM
To: Adrian Maddocks
Subject: RE: Bango Wind Farm - Notification and Feedback Request

Follow Up Flag: Follow up
Flag Status: Flagged

Hi Adrian,

Thanks for your follow-up email regarding Winds Prospect's proposed wind farm development near Boorowa, NSW, and asking for our comments.

Broadcast Australia (BA) builds/operates broadcast sites for the transmission of services for SBS and ABC Television and Radio. BA's closest site, Wades Hill, Crookwell, NSW, is approximately 56 km from the wind farm's proposed location.

As you know wind farms have been known to cause interference (ghosting), particularly to analogue television reception, caused by the turbine blades reflecting the signal in the reception area. It should be noted that BA plans to cease analogue television broadcasts from Wades Hill on 3 December 2013 (date yet to be confirmed). BA has undertaken a brief analysis of the proposal and, while we are not able to guarantee that no interference problems will occur for residents of the area, the chance of effects seems very remote due to the location of our sites in relation to the viewing audience and the proposed wind farm location. I note that your website states that a Communications Assessment was scheduled for March 2013 which was to examine any potential interference to radio/ TV/ microwave services in the area. It would be appreciated if you could provide me with a brief summary of the outcome of this assessment or provide me with a link to the report when it is available on your website.

Thanks for notifying us of this proposal and please keep us informed of progress. If you need any further information in relation to the above please contact me.

Regards,

Kate Mills

Property Manager

9 Thynne Street Bruce ACT 2617

Direct +61 (0) 2 6256 8534 **Mobile** +61 (0) 423 024 334

Switch +61 (0) 2 8113 4666

www.broadcastaustralia.com.au



PLEASE CONSIDER THE ENVIRONMENT BEFORE PRINTING

Looking for a new job? Visit our Careers site to see the opportunities available at Broadcast Australia:

<http://www.broadcastaustralia.com.au/the-company/careers/current-opportunities>.

From: Adrian Maddocks [mailto:adrian.maddocks@wpcwp.com.au]
Sent: Monday, 15 April 2013 3:40 PM
To: Kate Mills
Subject: RE: Bango Wind Farm - Notification and Feedback Request

Hi Kate,

Checking through my files, I cannot find a response following this initial email from yourself. Did you get a chance to check the turbine locations against broadcast locations to determine whether there were any issues?

Many thanks for your help.

Regards,

Adrian

Adrian Maddocks
Senior Development Manager

Wind Prospect CWP Pty Ltd

P.O. Box 1708, 45 Hunter Street, Newcastle, NSW 2300, Australia
T: +61 (0) 2 4013 4640 F: +61 (0) 2 4926 2154 M: +61 (0) 488 798311
E: adrian.maddocks@wpcwp.com.au W: www.windprospect.com.au



Please consider the environment before printing this email.

From: Kate Mills [<mailto:Kate.Mills@BroadcastAustralia.com.au>]
Sent: Wednesday, 12 September 2012 4:02 PM
To: Adrian Maddocks
Subject: FW: Bango Wind Farm - Notification and Feedback Request

Hi Adrian,

Please forward all correspondence on wind farm proposals in NSW to me in future. I will check the proximity of our broadcasting sites in the area and forward my comments to you shortly.

Regards,

Kate Mills

Property Manager
9 Thynne Street Bruce ACT 2617
Direct +61 (0) 2 6256 8534 **Mobile** +61 (0) 423 024 334
Switch +61 (0) 2 8113 4666
www.broadcastaustralia.com.au



BROADCAST AUSTRALIA

PLEASE CONSIDER THE ENVIRONMENT BEFORE PRINTING

From: Adrian Maddocks [<mailto:adrian.maddocks@wpcwp.com.au>]
Sent: Wednesday, 22 August 2012 3:23 PM
To: Kylie Potter
Subject: Bango Wind Farm - Notification and Feedback Request

Dear Kylie Potter,

Wind Prospect CWP is in the early stages of designing a wind farm project on rural land near Boorowa and Rye Park, north of Yass in NSW. The proposed Bango Wind Farm (www.bangowindfarm.com.au) could accommodate upwards of 100 wind turbines and produce in the order of 700 gigawatt hours (GWh) of clean, renewable energy, enough to supply the equivalent demand of 100,000 average homes across Australia.

This email has been sent to you in order to ensure that you have been informed about the project at this early stage and are brought up to date with the development of the wind farm. We welcome any comments you have about the project to further inform its design prior to submitting for planning consent in 2013.

It may be that this is the first notification of the project that you have received directly, and this reflects the maturity of the project. It is only recently that we have been able to more confidently define the turbine areas after a solid review of the requirements provided to us by the NSW Department of Planning and Infrastructure in March 2011. An updated map of the project investigation envelope for potential wind turbines can be found on the front page of

our first newsletter located on the project website [here](#). You will see that modifications have already been made to the project envelope, based on feedback received since March 2011.

The Preliminary Environmental Assessment was submitted to the NSW Department of Planning and Infrastructure in March 2011 and is available to view at www.planning.nsw.gov.au (following the link to Development – Major Project Register or click [here](#)). Over the next few months the focus is on seeking feedback from stakeholders and the local community, that will be fed into the project and help further shape the design and studies required to conduct the thorough assessment of the project.

At this stage, we are anticipating the maximum wind turbine height of the proposed wind farm to include towers up to 120 metres and rotor diameters of 136 metres, with a maximum blade tip height of 188 metres. These figures represent the largest available component sizes on the market and the approach is consistent with best practice assessment methodology.

If you have any questions about this letter or the project in general then please feel free to contact me through the channels below or on my mobile on 0488 798 311. I would be happy to answer any questions you have about the project.

Regards,



Adrian Maddocks
Senior Development Manager

Wind Prospect CWP Pty Ltd

P.O. Box 1708, 45 Hunter Street, Newcastle, NSW 2300, Australia
T: +61 (0) 2 4013 4640 F: +61 (0) 2 4926 2154 M: +61 (0) 488 798311
E: adrian.maddocks@wpcwp.com.au W: www.windprospect.com.au



This message (and any associated files) is intended only for the use of the individual or entity to which it is addressed and may contain information that is confidential, subject to copyright or constitutes a trade secret. If you are not the intended recipient you are hereby notified that any dissemination, copying or distribution of this message, or files associated with this message, is strictly prohibited. If you have received this message in error, please notify us immediately by replying to the message and deleting it from your computer.

IMPORTANT NOTICE

This email and any attachments may be confidential and/or privileged, in which case neither is intended to be waived. If received in error, please contact us and delete all copies. Before opening or using attachments, check them for viruses and defects. Our liability is limited to resupplying any affected attachments.

This message (and any associated files) is intended only for the use of the individual or entity to which it is addressed and may contain information that is confidential, subject to copyright or constitutes a trade secret. If you are not the intended recipient you are hereby notified that any dissemination, copying or

distribution of this message, or files associated with this message, is strictly prohibited. If you have received this message in error, please notify us immediately by replying to the message and deleting it from your computer.

IMPORTANT NOTICE

This email and any attachments may be confidential and/or privileged, in which case neither is intended to be waived. If received in error, please contact us and delete all copies. Before opening or using attachments, check them for viruses and defects. Our liability is limited to resupplying any affected attachments.

Adrian Maddocks

From: Alan Moston [Alan.Moston@gwcc.nsw.gov.au]
Sent: Tuesday, 23 April 2013 3:01 PM
To: Adrian Maddocks
Subject: Bango Wind Farm

Hi Adrian,

I have had a look at the proposed Wind Farm information and I can not see it having any impact on our communication links as we are to the west of the proposed sites.

Thank you for sending the info and asking for comment.

Regards

Alan Moston

Electrical Services Technical Support

Goldenfields Water County Council

M. Ph. 0427232629