



Environmental Monitoring Summary Report

Port Kembla Gas Terminal

Infrastructure Approval **SSI-9471**
EPL Licence Number: **21529**

Reporting period: **1 August 2024 – 31 August 2024**

Date published: **19 September 2024**



1 Project background

AIE is responsible for the development of a liquefied natural gas (LNG) import terminal at Port Kembla, south of Wollongong, NSW (the Project). The Project will be the first of its kind in NSW and will provide a simple and flexible solution to the state’s gas supply challenges.

The Project has been declared Critical State Significant Infrastructure (CSSI) in accordance with Section 5.13 of the *Environmental Planning and Assessment Act 1979* (EP&A Act) (NSW) and Schedule 5 of the *State Environmental Planning Policy State and Regional Development* (SRD SEPP). The Project received Infrastructure Approval from the Minister for Planning and Public Spaces on 29 of April 2019.

The construction of the Project is primarily associated with the establishment of a new berth facility at Port Kembla to enable a Liquefied Natural Gas (LNG) Carrier to berth alongside the Floating Storage and Re-gasification Unit (FSRU) and new infrastructure to connect the terminal to the existing gas network. The location of the Project is shown on the Environmental Monitoring Location Plan provided as Appendix A.

An Environment Protection Licence (EPL) (EPL No. 21529) was issued for the Project by the NSW Environment Protection Authority (EPA) on 2 June 2021. The details of the EPL are provided below in Table 1-1.

Table 1-1 EPL Details

EPL No.	21529
Anniversary Date:	2 June
Licensee:	Australian Industrial Energy Pty Ltd
	PO Box 3155 Broadway
	Nedlands WA 6009
Premises:	Port Kembla Gas Terminal, Port Kembla NSW 2505
Scheduled Activity	Contaminated soil treatment
	Crushing, grinding or separating
	Petroleum products storage



2 Report purpose

This Monthly Environmental Monitoring Report has been prepared to provide an overview of project activities undertaken during the reporting period and those forecast for the next reporting period (refer to Section 3), and to satisfy the requirements associated with the reporting and publishing of monitoring data and results required under the relevant conditions of approval and environmental management plans as detailed further in Table 2-1.

Table 2-1 Environmental monitoring reporting requirements

Document	Clause or section	Requirement	Addressed:
DPIE SSI-9471	Sch. 4 Cond. 8	Regular Reporting – The Proponent must provide regular reporting on the environmental performance of the development on its website in accordance with the reporting requirements in any strategies, plans or programs approved under the conditions of this approval.	This report which will be made available on the Project Website.
	Sch. 4 Cond. 12	Access to information – From the commencement of development under this approval, the Proponent shall: (a) Make copies of the following information publicly available on its website:	
		- a comprehensive summary of the monitoring results of the development, reported in accordance with the specifications in any conditions of this approval, or any approved plans and programs	Section 4
		- a summary of complaints, which is to be updated monthly	Section 5
AIE Air Quality Management Plan (Stage 2A and 2B)	Section 11.4	A monthly environmental monitoring report will be developed for each calendar month which will include details of the monitoring results and frequencies and inclusion of any exceedance of EPL No. 21529 air monitoring limits / criteria. A copy of the monthly environmental monitoring report will be made available on the AIE Project website.	Air quality monitoring results and frequencies and inclusion of any exceedance provided in Section 4.1

3 Project activities

3.1 Project status

The project has progressed to Stage 2A, Stage 2B and Stage 3 as follows:

Stage 2A: Marine Berth Construction – Land Based. Associated works include:

- Quay wall construction.
- Installation of communications conduit, potable water line, and 11kV power cable and Pad-mount Substation within the Marine Berth Construction and Dredging (MBD) Site Compound.
- Construction of the Onshore Receiving Facilities (ORF), which comprises three areas: Wharf Topside Area; Utility Area; and Common Area.
- Pipeline construction and associated ancillary infrastructure within MBD Site Compound delivered as part of ORF scope.

Stage 2B: Marine Berth Construction – Marine Based. Associated works include:

- Continuation of Stage 2A works
- Excavation and dredging of the MBD Site Compound in the Inner Harbour and the Emplacement Cell in the Outer Harbour.
- Construction of the Emplacement Cell in the Outer Harbour.
- Marine based construction activities including installation of navigational aids and revetments at the MBD Site Compound.

Stage 3: Gas pipeline Construction. Associated works applicable to EPL No. 21529 include:

- Construction of gas pipeline section within Berth 101

3.2 Project activities for the reporting month

- Ongoing management / handling of capping layer material.
- Ongoing emplacement cell construction in the Outer Harbour – placing of capping material.
- Ongoing wharf construction / rectification works at Berth 101.
- Treatment of acid sulfate soil materials at the Outer Harbour laydown area.
- Berth 101 systems commissioning

3.3 Project activities for the upcoming month

- Ongoing wharf construction / rectification works at Berth 101.
- Ongoing management / handling of capping layer material.
- Load out and disposal of treated acid sulfate soil materials from the Outer Harbour laydown area.
- Dust suppression polymer application works at Berth 101 and the Outer Harbour.
- Permanent deployment boom installation in southern ponds at Berth 101.
- Berth 101 systems commissioning



4 Environmental monitoring data

The following sections present a summary of the air quality monitoring data for the reporting month.

A copy of this report will be made available on the Project website at the following web-address:

<https://www.squadronenergy.com/our-projects/port-kembla-energy-terminal>

4.1 Air quality

4.1.1 Air Quality Monitoring Locations and Frequency

Air quality monitoring equipment is installed to the east, to the west, and within the central portion of the Outer Harbour site.

A summary of the air quality monitoring locations is provided below in Table 4-1 and a monitoring location plan is provided in **Appendix A**.

Table 4-1 Air quality monitoring locations

EPL Ref.	Monitoring location	Monitoring type	Monitoring parameter	Monitoring frequency
12	Southern side of emplacement area, Outer Harbour	Dust Deposition Gauge	Particulates - Deposited Matter (gm/m ² /month)	Monthly
14	Eastern side of emplacement area, Outer Harbour	Ambient Air Monitoring - High Volume Air Sampler	Total suspended particles (TSP) (ug/m ³)	Special Frequency 1 (24-hour period every 6 days)
22	Northern side of emplacement area, Outer Harbour			
13	Southern side of emplacement area, Outer Harbour	Real time dust monitoring	PM10 (ug/m ³)	Continuous
15	Eastern side of emplacement area, Outer Harbour			
23	Northern side of emplacement area, Outer Harbour			

4.1.2 Air Quality Monitoring Results

The air quality monitoring results for the reporting month are presented below in Table 4-2.

Table 4-2 Air quality monitoring results

Monitoring Location (EPL Reference)		Monitoring parameter							Events above criteria ¹
		Particulates Deposited Matter (Depositional dust gauge) ²	Total Suspended Particulate (High Volume Air Sampler)			PM10 (Real-time Dust Track or equiv.)			
			Average	Min.	Max.	Average	Min.	Max.	
			g/m ² /month	mg/m ³	mg/m ³	mg/m ³	µg/m ³ /24 hr average	µg/m ³ /24 hr average	
Performance Criteria ³		NA	NA	NA	NA	NA	NA	200	NA
Outer Harbour South	EPL 12	0.90	0.04	0.02	0.06	No PM10 monitoring required at this EPL Point			NA
	EPL 13	No Dust Deposition Gauge or HiVol required at this EPL Point				19.15	7.82	69.36	0
Outer Harbour East	EPL 14	0.80	0.04	0.03	0.06	No PM10 monitoring required at this EPL Point			NA
	EPL 15	No Dust Deposition Gauge or HiVol required at this EPL Point				40.73	13.52	535.64	1
Outer Harbour North	EPL 22	1.00	0.07	0.03	0.18	No PM10 monitoring required at this EPL Point			NA
	EPL 23	No Dust Deposition Gauge or HiVol required at this EPL Point				25.58	11.05	115.07	0

¹Includes individual number of times results recorded above Stage 2A and Stage 2B performance criteria (200 µg/m³/24-hour average). Refer to **Appendix B** for event above criteria reports. Note that the performance criteria is based on an internal criteria and is not a requirement under the EPL.

²Assessed as Total Insoluble.

³Internal performance criteria as per the Port Kembla Gas Terminal Air Quality Management Plan - Stage 2A and 2B Marine Berth Construction and Dredging – Land and Marine Based (May 2022).



5 Environmental complaints

A summary of environmental complaints received during the reporting month is presented below in Table 5-1.

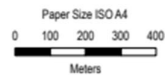
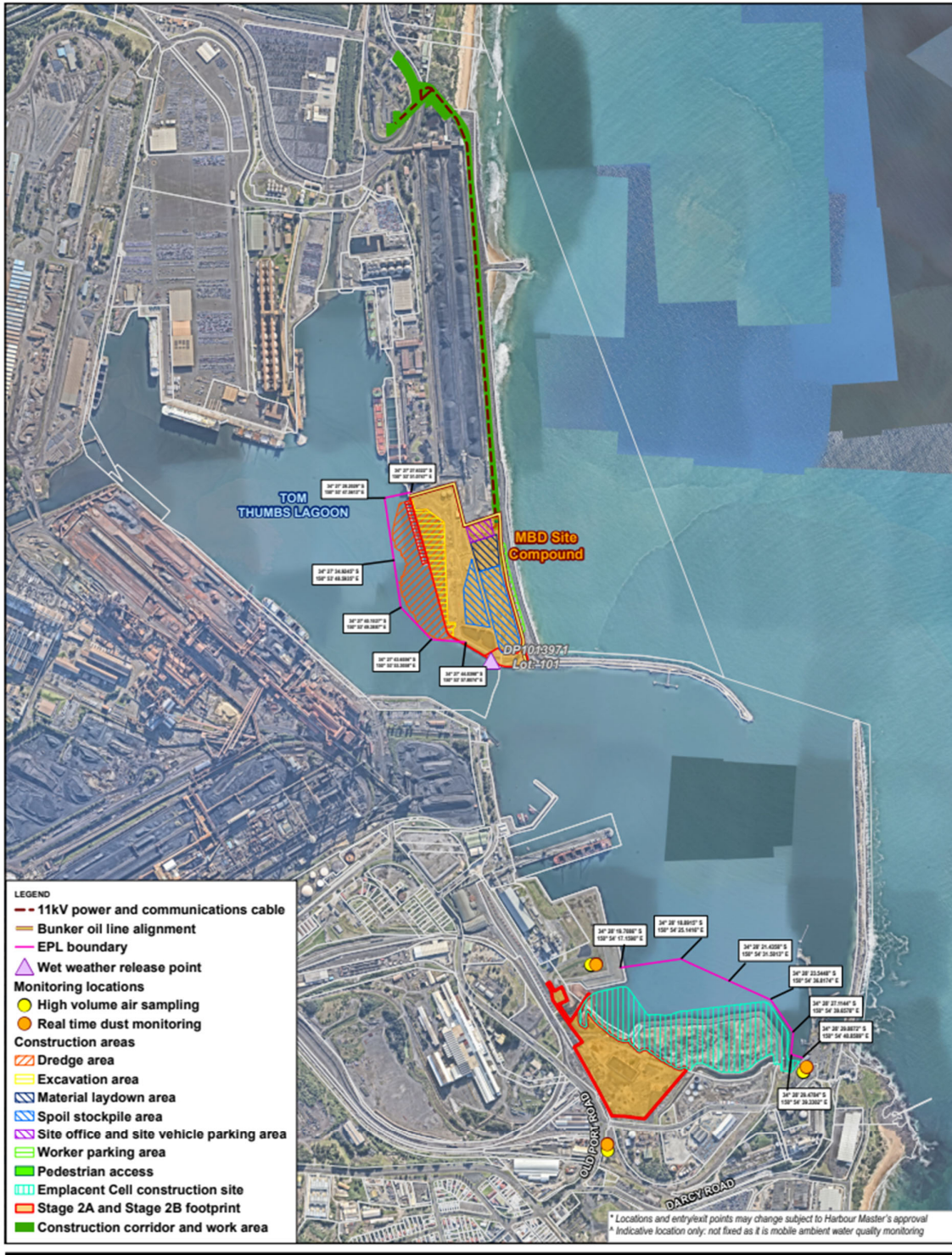
Table 5-1 Environmental complaints summary

Pollution category	Number of complaints
Air	2
Water	0
Noise	0
Waste	0
Other	0



Appendices

Appendix A - Monitoring Location Plan



Australian Industrial Energy
 Port Kembla Energy Terminal

Project No. 2127477
 Revision No. E
 Date 19 Jul 2024

Premise Plan

FIGURE 1

Appendix B – Summary of Events Above Criteria

Each exceedance triggers an investigation including the nature of project activities being undertaken, evaluation of wind direction, comparison of upwind and downwind monitors at the time of the event. Dust prevention controls are continually being assessed to ensure their adequacy.

Air Monitoring Events Above Criteria*

Date	Location	Exceedance value (ug/m ³ /24 hours)	Action Taken & Investigation Outcomes
28/08/2024	EPL15 (Outer Harbour)	535.64	<p>On 28/08/2024, the 24-hour average for EPL15 exceeded the set criteria due to severe wind conditions, with maximum gusts reaching 113 km/h.</p> <p>Contingency measures were in place in accordance with the AQMP, including water application, ceasing potential dust generating activities, surface stabilisation</p> <p>On this day, all dust-generating activities were stopped at the Outer Harbour. A water cart was operating in the laydown area but could not operate on the Emplacement Cell due to safety concerns. Dust suppression polymer will be applied once work on the Emplacement Cell is complete, scheduled to be undertaken during the September 2024.</p> <p>Given the nature of the winds and the location of the monitoring station, it is likely external factors also contributed to the elevated dust levels.</p>

*Internal performance criteria as per the Port Kembla Gas Terminal Air Quality Management Plan - Stage 2A and 2B Marine Berth Construction and Dredging – Land and Marine Based (May 2022).